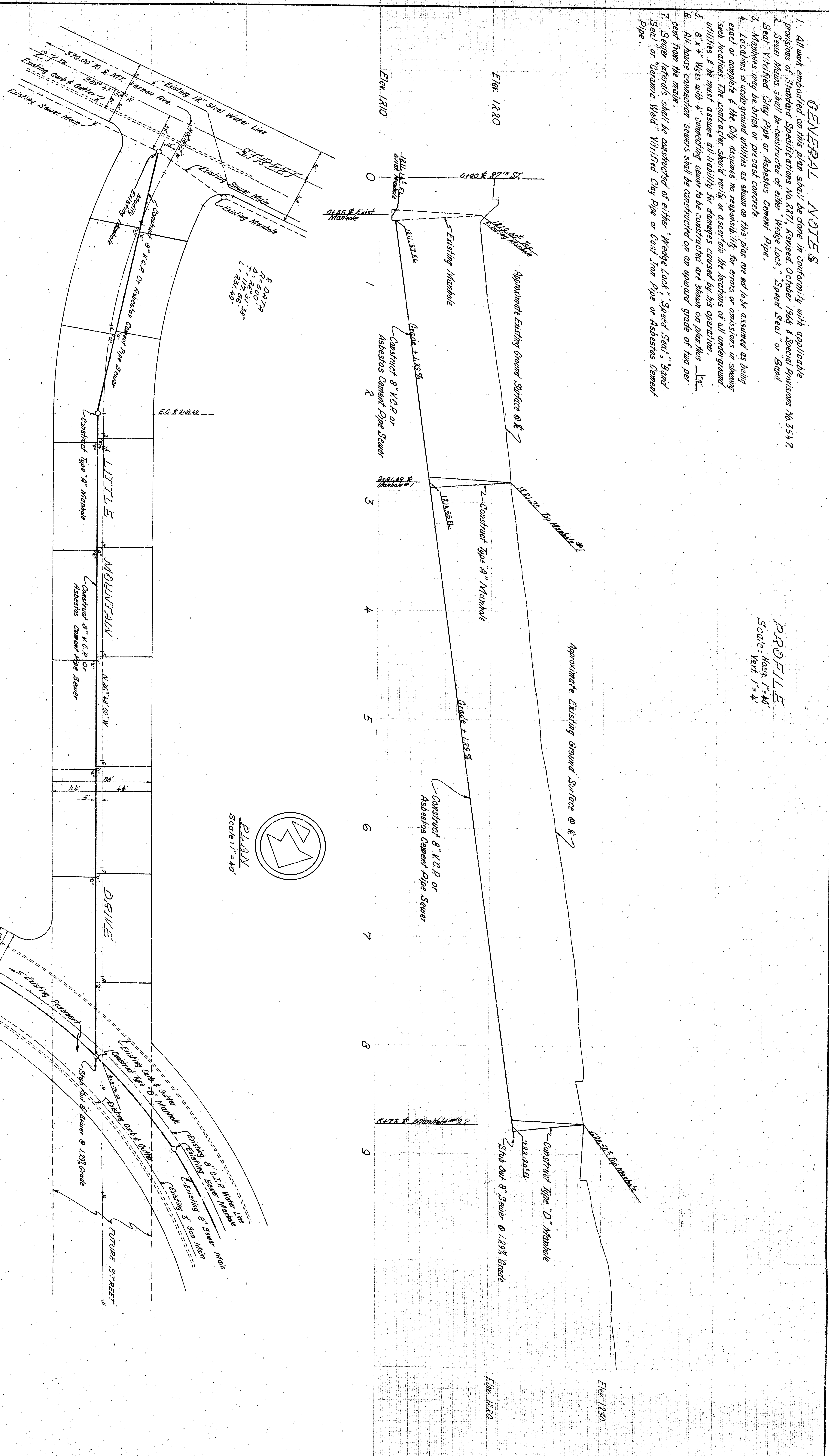


**GENERAL NOTES**

1. All work embodied on this plan shall be done in conformity with applicable provisions of Standard Specifications No. 2277, Revised October 1964 & Special Provisions No. 3547.
2. Sewer mains shall be constructed of either "Wedge Lock", "Speed Seal" or "Band Seal" Vitrified Clay Pipe or Asbestos Cement Pipe.
3. Manholes may be brick or precast concrete.
4. Locations of underground utilities as shown on this plan are not to be assumed as being exact or complete & the City assumes no responsibility for errors or omissions in showing such locations. The contractor should verify or accept the locations of all underground utilities & he must assume all liability for damages caused by his operation.
5. 8" x 4" Wyes with 4" connecting sewer to be constructed on an upward grade of two per cent from the main.
6. All house connection sewers shall be constructed on an upward grade of two per cent.
7. Sewer laterals shall be constructed of either "Wedge Lock", "Speed Seal", "Band Seal" or Ceramic Weld Vitrified Clay Pipe or Cast Iron Pipe or Asbestos Cement Pipe.

**PROF. E. PAROELLE**  
 Scale: Horiz. 1"=40'  
 Vert. 1"=4'



**BENJAMIN M. BERRY**  
 City of San Bernardino Dept. No. 12  
 M. E. Co. 27th St. & 4th Avenue, East Side  
 of St. Francis, 15th Ward of Cal., Cal. 92415

APPROVED	DATE	SCALE
<i>(Signature)</i>	12-1-64	1"=40'
REGISTERED CIVIL ENGINEER NO. 12853		
DRAWING NO. 3547	CHECKED BY	RECOMMENDED BY
	<i>(Signature)</i>	<i>(Signature)</i>
CITY OF SAN BERNARDINO DEPARTMENT OF ENGINEERING SEWER RELOCATION LITTLE MOUNTAIN DRIVE TO 27th STREET		